



The Creative Industries in KY State House District 33

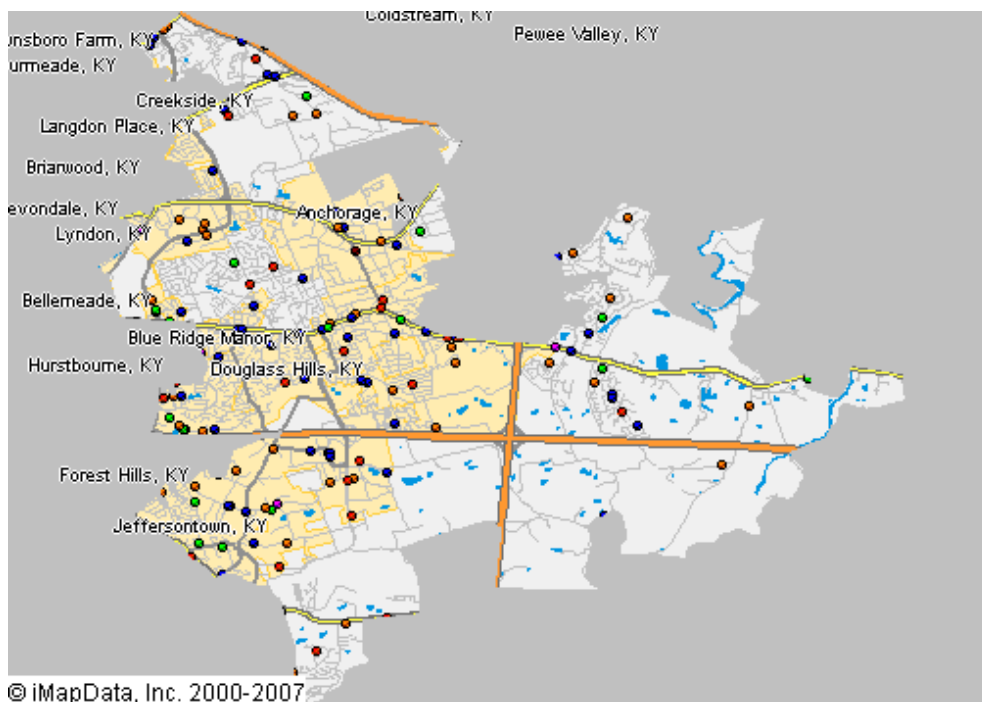
This *Creative Industries* report offers a research-based approach to understanding the scope and economic importance of the arts in **KY State House District 33**. The creative industries are composed of arts-centric businesses that range from nonprofit museums, symphonies, and theaters to for-profit film, architecture, and advertising companies. The creative industries are the high-octane fuel that drives the "information economy," the fastest growing segment of the nation's economy.

Nationally, there are 612,095 businesses in the U.S. involved in the creation or distribution of the arts that employ 2.98 million people, which is 4.3 percent of all businesses and 2.2 percent of all employees. Between 2007 and 2008, the number of arts businesses and employees grew 12 percent. The source for these data is Dun & Bradstreet, the most comprehensive and trusted source for business information in the U.S. Growth of the businesses that comprise the creative industries was greater than the increase among the 14.3 million businesses tracked by Dun & Bradstreet.

As of January 2008, KY State House District 33 is home to 139 arts-related businesses that employ 852 people. These arts-centric businesses play an important role in building and sustaining economic vibrancy. They employ people, spend money locally, generate government revenue, and are a cornerstone of tourism and economic development. The map below provides a clear picture of the creative industries in **KY State House District 33**, with each dot representing an arts-centric business.

139 Arts-Related Businesses in KY State House District 33 Employ 852 People

- Arts-Related Business**
- Museum/Collections
 - Performing Arts
 - Visual/Photography
 - Film, Radio, TV
 - Design/Publishing
 - Arts Schools/Services





Arts-Related Business and Employment in KY State House District 33 January 2008

CATEGORY	BUSINESSES	EMPLOYEES
Museums and Collections	1	2
Museums	1	2
Performing Arts	17	81
Music	8	54
Services & Facilities	3	19
Performers	6	8
Visual Arts/Photography	53	237
Crafts	4	85
Visual Arts	2	2
Photography	32	74
Services	15	76
Film, Radio and TV	25	219
Motion Pictures	19	127
Television	2	52
Radio	4	40
Design and Publishing	39	307
Architecture	5	25
Design	18	65
Publishing	2	5
Advertising	14	212
Arts Schools and Services	4	6
Arts Schools and Instruction	3	4
Agents	1	2
GRAND TOTAL	139	852

Note: As the source of these data is based solely on businesses that have registered with Dun & Bradstreet, our analyses indicate an under-representation of nonprofit arts organizations and individual artists. Therefore, this Creative Industries report should be considered a conservative estimate. For more information, maps, and to make sure you are included in our Creative Industries research, visit www.AmericansForTheArts.org/CreativeIndustries



Arts-Related Business and Employment in KY State House District 33 2007 to 2008

CATEGORY	BUSINESSES			EMPLOYEES		
	2007	2008	% Change	2007	2008	% Change
Museums and Collections	1	1	0.00%	2	2	0.00%
Museums	1	1	0.00%	2	2	0.00%
Performing Arts	18	17	-5.56%	83	81	-2.41%
Music	9	8	-11.11%	56	54	-3.57%
Services & Facilities	3	3	0.00%	19	19	0.00%
Performers	6	6	0.00%	8	8	0.00%
Visual Arts/Photography	43	53	23.26%	196	237	20.92%
Crafts	3	4	33.33%	83	85	2.41%
Visual Arts	2	2	0.00%	2	2	0.00%
Photography	27	32	18.52%	60	74	23.33%
Services	11	15	36.36%	51	76	49.02%
Film, Radio and TV	21	25	19.05%	181	219	20.99%
Motion Pictures	17	19	11.76%	125	127	1.60%
Television	2	2	0.00%	52	52	0.00%
Radio	2	4	100.00%	4	40	900.00%
Design and Publishing	40	39	-2.50%	477	307	-35.64%
Architecture	4	5	25.00%	22	25	13.64%
Design	19	18	-5.26%	83	65	-21.69%
Publishing	1	2	100.00%	2	5	150.00%
Advertising	16	14	-12.50%	370	212	-42.70%
Arts Schools and Services	2	4	100.00%	3	6	100.00%
Arts Schools and Instruction	1	3	200.00%	1	4	300.00%
Agents	1	1	0.00%	2	2	0.00%
GRAND TOTAL	125	139	11.20%	942	852	-9.55%

Data Source: D&B January 2008 & January 2007

www.AmericansForTheArts.org