



The Creative Industries in KY State House District 88

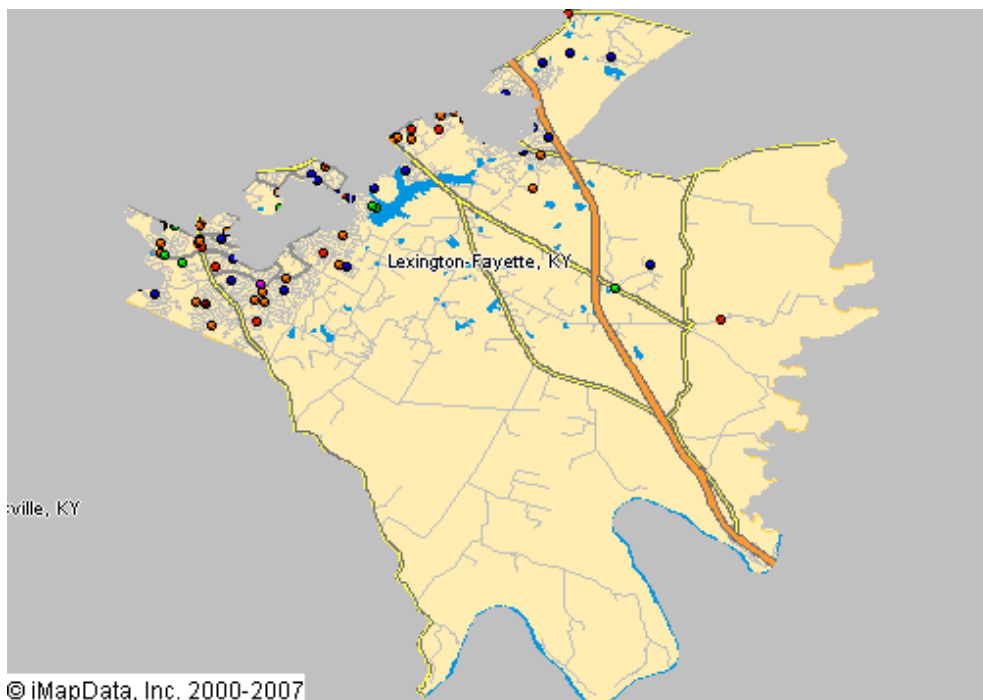
This *Creative Industries* report offers a research-based approach to understanding the scope and economic importance of the arts in **KY State House District 88**. The creative industries are composed of arts-centric businesses that range from nonprofit museums, symphonies, and theaters to for-profit film, architecture, and advertising companies. The creative industries are the high-octane fuel that drives the "information economy," the fastest growing segment of the nation's economy.

Nationally, there are 612,095 businesses in the U.S. involved in the creation or distribution of the arts that employ 2.98 million people, which is 4.3 percent of all businesses and 2.2 percent of all employees. Between 2007 and 2008, the number of arts businesses and employees grew 12 percent. The source for these data is Dun & Bradstreet, the most comprehensive and trusted source for business information in the U.S. Growth of the businesses that comprise the creative industries was greater than the increase among the 14.3 million businesses tracked by Dun & Bradstreet.

As of January 2008, KY State House District 88 is home to 57 arts-related businesses that employ 261 people. These arts-centric businesses play an important role in building and sustaining economic vibrancy. They employ people, spend money locally, generate government revenue, and are a cornerstone of tourism and economic development. The map below provides a clear picture of the creative industries in **KY State House District 88**, with each dot representing an arts-centric business.

57 Arts-Related Businesses in KY State House District 88 Employ 261 People

- Arts-Related Business**
- Museum/Collections
 - Performing Arts
 - Visual/Photography
 - Film, Radio, TV
 - Design/Publishing
 - Arts Schools/Services





Arts-Related Business and Employment in KY State House District 88 January 2008

CATEGORY	BUSINESSES	EMPLOYEES
Museums and Collections	1	2
Zoos and Botanical	1	2
Performing Arts	5	11
Music	4	10
Performers	1	1
Visual Arts/Photography	18	32
Crafts	2	3
Visual Arts	2	7
Photography	12	19
Services	2	3
Film, Radio and TV	12	134
Motion Pictures	9	39
Television	1	89
Radio	2	6
Design and Publishing	20	81
Architecture	4	38
Design	8	12
Advertising	8	31
Arts Schools and Services	1	1
Arts Schools and Instruction	1	1
GRAND TOTAL	57	261

Note: As the source of these data is based solely on businesses that have registered with Dun & Bradstreet, our analyses indicate an under-representation of nonprofit arts organizations and individual artists. Therefore, this Creative Industries report should be considered a conservative estimate. For more information, maps, and to make sure you are included in our Creative Industries research, visit www.AmericansForTheArts.org/CreativeIndustries

www.AmericansForTheArts.org



Arts-Related Business and Employment in KY State House District 88 2007 to 2008

CATEGORY	BUSINESSES			EMPLOYEES		
	2007	2008	% Change	2007	2008	% Change
Museums and Collections	0	1	100.00%	0	2	200.00%
Zoos and Botanical	0	1	100.00%	0	2	200.00%
Performing Arts	5	5	0.00%	9	11	22.22%
Music	3	4	33.33%	6	10	66.67%
Services & Facilities	1	0	-100.00%	2	0	-200.00%
Performers	1	1	0.00%	1	1	0.00%
Visual Arts/Photography	16	18	12.50%	28	32	14.29%
Crafts	2	2	0.00%	2	3	50.00%
Visual Arts	1	2	100.00%	1	7	600.00%
Photography	10	12	20.00%	15	19	26.67%
Services	3	2	-33.33%	10	3	-70.00%
Film, Radio and TV	10	12	20.00%	132	134	1.52%
Motion Pictures	7	9	28.57%	37	39	5.41%
Television	1	1	0.00%	89	89	0.00%
Radio	2	2	0.00%	6	6	0.00%
Design and Publishing	23	20	-13.04%	83	81	-2.41%
Architecture	5	4	-20.00%	39	38	-2.56%
Design	10	8	-20.00%	13	12	-7.69%
Advertising	8	8	0.00%	31	31	0.00%
Arts Schools and Services	0	1	100.00%	0	1	100.00%
Arts Schools and Instruction	0	1	100.00%	0	1	100.00%
GRAND TOTAL	54	57	5.56%	252	261	3.57%

Data Source: D&B January 2008 & January 2007

www.AmericansForTheArts.org