



## The Creative Industries in MD State House District 30

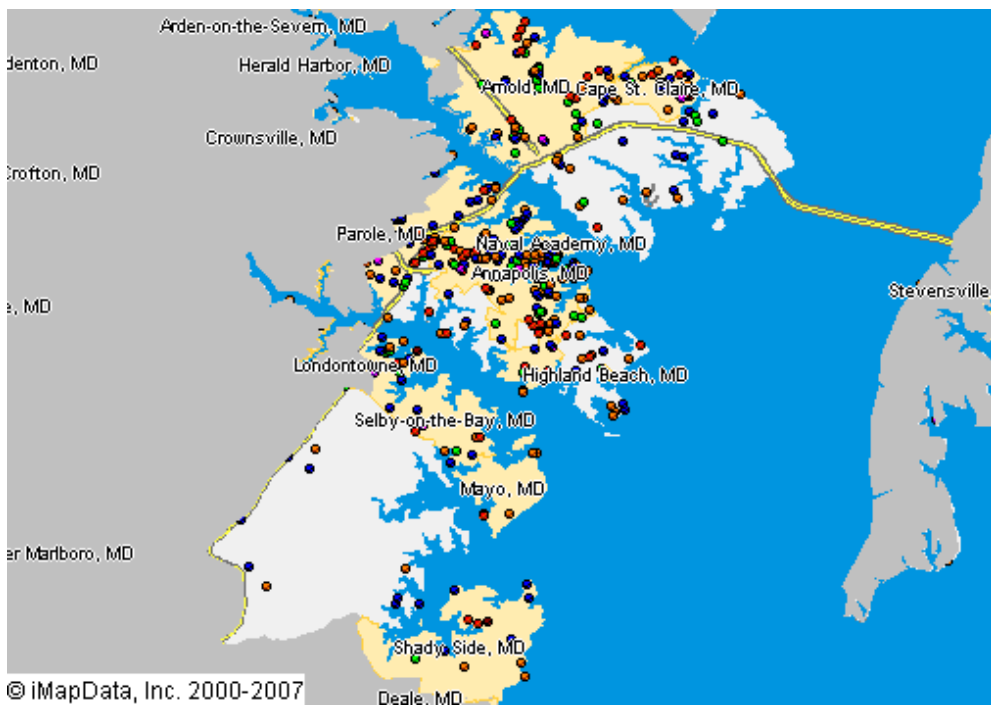
This *Creative Industries* report offers a research-based approach to understanding the scope and economic importance of the arts in **MD State House District 30**. The creative industries are composed of arts-centric businesses that range from nonprofit museums, symphonies, and theaters to for-profit film, architecture, and advertising companies. The creative industries are the high-octane fuel that drives the "information economy," the fastest growing segment of the nation's economy.

Nationally, there are 612,095 businesses in the U.S. involved in the creation or distribution of the arts that employ 2.98 million people, which is 4.3 percent of all businesses and 2.2 percent of all employees. Between 2007 and 2008, the number of arts businesses and employees grew 12 percent. The source for these data is Dun & Bradstreet, the most comprehensive and trusted source for business information in the U.S. Growth of the businesses that comprise the creative industries was greater than the increase among the 14.3 million businesses tracked by Dun & Bradstreet.

**As of January 2008, MD State House District 30 is home to 456 arts-related businesses that employ 1,435 people.** These arts-centric businesses play an important role in building and sustaining economic vibrancy. They employ people, spend money locally, generate government revenue, and are a cornerstone of tourism and economic development. The map below provides a clear picture of the creative industries in **MD State House District 30**, with each dot representing an arts-centric business.

### 456 Arts-Related Businesses in MD State House District 30 Employ 1,435 People

- Arts-Related Business**
- Museum/Collections
  - Performing Arts
  - Visual/Photography
  - Film, Radio, TV
  - Design/Publishing
  - Arts Schools/Services





## Arts-Related Business and Employment in MD State House District 30 January 2008

CATEGORY	BUSINESSES	EMPLOYEES
<b>Museums and Collections</b>	<b>18</b>	<b>75</b>
Museums	15	58
Historical Society	3	17
<b>Performing Arts</b>	<b>67</b>	<b>153</b>
Music	32	75
Theater	5	18
Dance	1	15
Opera	1	1
Services & Facilities	11	15
Performers	17	29
<b>Visual Arts/Photography</b>	<b>153</b>	<b>372</b>
Crafts	11	34
Visual Arts	20	41
Photography	95	188
Services	27	109
<b>Film, Radio and TV</b>	<b>54</b>	<b>285</b>
Motion Pictures	44	137
Television	7	31
Radio	3	117
<b>Design and Publishing</b>	<b>149</b>	<b>506</b>
Architecture	56	229
Design	64	185
Advertising	29	92
<b>Arts Schools and Services</b>	<b>15</b>	<b>44</b>
Arts Councils	1	2
Arts Schools and Instruction	12	41
Agents	2	1
<b>GRAND TOTAL</b>	<b>456</b>	<b>1,435</b>

Note: As the source of these data is based solely on businesses that have registered with Dun & Bradstreet, our analyses indicate an under-representation of nonprofit arts organizations and individual artists. Therefore, this Creative Industries report should be considered a conservative estimate. For more information, maps, and to make sure you are included in our Creative Industries research, visit [www.AmericansForTheArts.org/CreativeIndustries](http://www.AmericansForTheArts.org/CreativeIndustries)



## Arts-Related Business and Employment in MD State House District 30 2007 to 2008

CATEGORY	BUSINESSES			EMPLOYEES		
	2007	2008	% Change	2007	2008	% Change
<b>Museums and Collections</b>	<b>14</b>	<b>18</b>	<b>28.57%</b>	<b>66</b>	<b>75</b>	<b>13.64%</b>
Museums	11	15	36.36%	49	58	18.37%
Historical Society	3	3	0.00%	17	17	0.00%
<b>Performing Arts</b>	<b>60</b>	<b>67</b>	<b>11.67%</b>	<b>139</b>	<b>153</b>	<b>10.07%</b>
Music	32	32	0.00%	78	75	-3.85%
Theater	5	5	0.00%	18	18	0.00%
Dance	1	1	0.00%	15	15	0.00%
Opera	1	1	0.00%	1	1	0.00%
Services & Facilities	8	11	37.50%	10	15	50.00%
Performers	13	17	30.77%	17	29	70.59%
<b>Visual Arts/Photography</b>	<b>142</b>	<b>153</b>	<b>7.75%</b>	<b>361</b>	<b>372</b>	<b>3.05%</b>
Crafts	10	11	10.00%	30	34	13.33%
Visual Arts	19	20	5.26%	39	41	5.13%
Photography	85	95	11.76%	188	188	0.00%
Services	28	27	-3.57%	104	109	4.81%
<b>Film, Radio and TV</b>	<b>52</b>	<b>54</b>	<b>3.85%</b>	<b>362</b>	<b>285</b>	<b>-21.27%</b>
Motion Pictures	41	44	7.32%	209	137	-34.45%
Television	5	7	40.00%	27	31	14.81%
Radio	6	3	-50.00%	126	117	-7.14%
<b>Design and Publishing</b>	<b>137</b>	<b>149</b>	<b>8.76%</b>	<b>527</b>	<b>506</b>	<b>-3.98%</b>
Architecture	54	56	3.70%	245	229	-6.53%
Design	57	64	12.28%	165	185	12.12%
Publishing	1	0	-100.00%	5	0	-500.00%
Advertising	25	29	16.00%	112	92	-17.86%
<b>Arts Schools and Services</b>	<b>15</b>	<b>15</b>	<b>0.00%</b>	<b>42</b>	<b>44</b>	<b>4.76%</b>
Arts Councils	1	1	0.00%	2	2	0.00%
Arts Schools and Instruction	12	12	0.00%	39	41	5.13%
Agents	2	2	0.00%	1	1	0.00%
<b>GRAND TOTAL</b>	<b>420</b>	<b>456</b>	<b>8.57%</b>	<b>1,497</b>	<b>1,435</b>	<b>-4.14%</b>

Data Source: D&B January 2008 & January 2007

[www.AmericansForTheArts.org](http://www.AmericansForTheArts.org)