

The Creative Industries in MD State Senate District 32

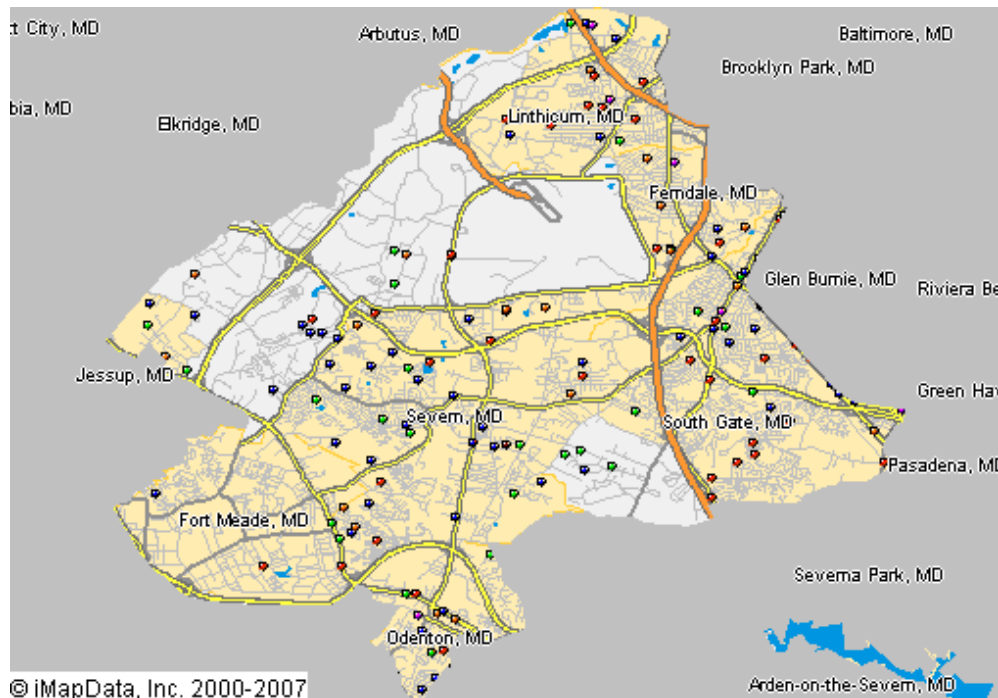
This *Creative Industries* report offers a research-based approach to understanding the scope and economic importance of the arts in **MD State Senate District 32**. The creative industries are composed of arts-centric businesses that range from nonprofit museums, symphonies, and theaters to for-profit film, architecture, and advertising companies. The creative industries are the high-octane fuel that drives the "information economy," the fastest growing segment of the nation's economy.

Nationally, there are 612,095 businesses in the U.S. involved in the creation or distribution of the arts that employ 2.98 million people, which is 4.3 percent of all businesses and 2.2 percent of all employees. Between 2007 and 2008, the number of arts businesses and employees grew 12 percent. The source for these data is Dun & Bradstreet, the most comprehensive and trusted source for business information in the U.S. Growth of the businesses that comprise the creative industries was greater than the increase among the 14.3 million businesses tracked by Dun & Bradstreet.

As of January 2008, MD State Senate District 32 is home to 185 arts-related businesses that employ 945 people. These arts-centric businesses play an important role in building and sustaining economic vibrancy. They employ people, spend money locally, generate government revenue, and are a cornerstone of tourism and economic development. The map below provides a clear picture of the creative industries in **MD State Senate District 32**, with each dot representing an arts-centric business.

185 Arts-Related Businesses in MD State Senate District 32 Employ 945 People

- Arts-Related Business**
- Museum/Collections
 - Performing Arts
 - Visual/Photography
 - Film, Radio, TV
 - Design/Publishing
 - Arts Schools/Services





Arts-Related Business and Employment in MD State Senate District 32 January 2008

CATEGORY	BUSINESSES	EMPLOYEES
Museums and Collections	2	52
Museums	1	50
Historical Society	1	2
Performing Arts	43	156
Music	17	62
Theater	1	1
Services & Facilities	12	61
Performers	13	32
Visual Arts/Photography	64	273
Crafts	2	40
Visual Arts	4	5
Photography	42	144
Services	16	84
Film, Radio and TV	39	324
Motion Pictures	26	275
Television	1	30
Radio	12	19
Design and Publishing	33	132
Architecture	4	37
Design	20	57
Advertising	9	38
Arts Schools and Services	4	8
Arts Schools and Instruction	4	8
GRAND TOTAL	185	945

Note: As the source of these data is based solely on businesses that have registered with Dun & Bradstreet, our analyses indicate an under-representation of nonprofit arts organizations and individual artists. Therefore, this Creative Industries report should be considered a conservative estimate. For more information, maps, and to make sure you are included in our Creative Industries research, visit www.AmericansForTheArts.org/CreativeIndustries



Arts-Related Business and Employment in MD State Senate District 32 2007 to 2008

CATEGORY	BUSINESSES			EMPLOYEES		
	2007	2008	% Change	2007	2008	% Change
Museums and Collections	2	2	0.00%	52	52	0.00%
Museums	1	1	0.00%	50	50	0.00%
Historical Society	1	1	0.00%	2	2	0.00%
Performing Arts	37	43	16.22%	180	156	-13.33%
Music	14	17	21.43%	58	62	6.90%
Theater	1	1	0.00%	1	1	0.00%
Services & Facilities	9	12	33.33%	87	61	-29.89%
Performers	13	13	0.00%	34	32	-5.88%
Visual Arts/Photography	63	64	1.59%	358	273	-23.74%
Crafts	3	2	-33.33%	42	40	-4.76%
Visual Arts	2	4	100.00%	2	5	150.00%
Photography	44	42	-4.55%	229	144	-37.12%
Services	14	16	14.29%	85	84	-1.18%
Film, Radio and TV	41	39	-4.88%	332	324	-2.41%
Motion Pictures	28	26	-7.14%	284	275	-3.17%
Television	1	1	0.00%	30	30	0.00%
Radio	12	12	0.00%	18	19	5.56%
Design and Publishing	21	33	57.14%	106	132	24.53%
Architecture	2	4	100.00%	31	37	19.35%
Design	12	20	66.67%	42	57	35.71%
Advertising	7	9	28.57%	33	38	15.15%
Arts Schools and Services	5	4	-20.00%	9	8	-11.11%
Arts Schools and Instruction	5	4	-20.00%	9	8	-11.11%
GRAND TOTAL	169	185	9.47%	1,037	945	-8.87%

Data Source: D&B January 2008 & January 2007

www.AmericansForTheArts.org