



The Creative Industries in 3rd Suffolk

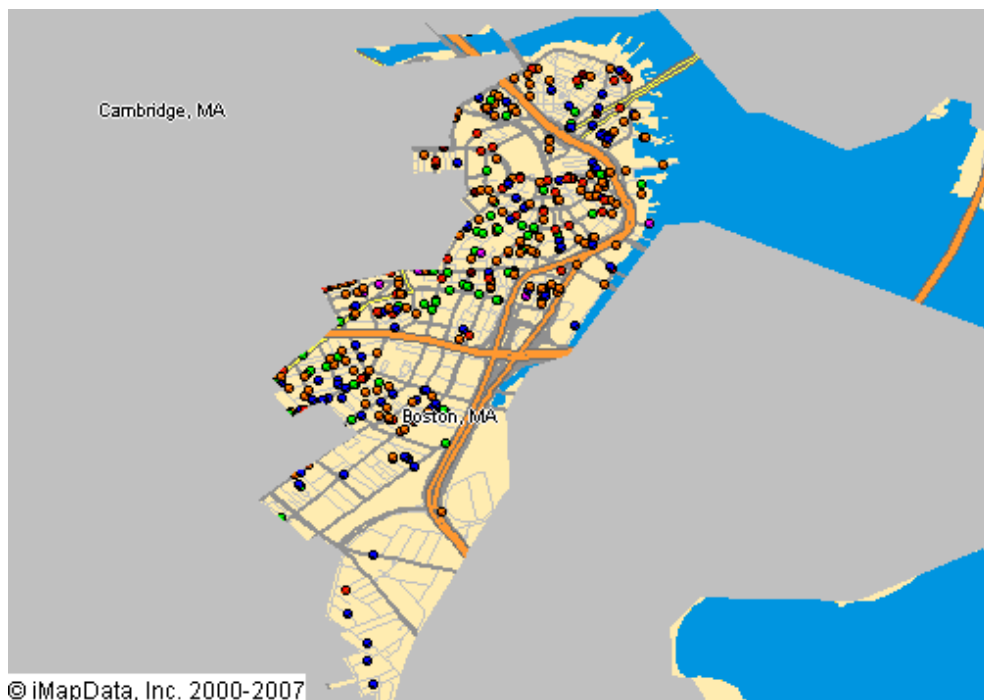
This *Creative Industries* report offers a research-based approach to understanding the scope and economic importance of the arts in **3rd Suffolk**. The creative industries are composed of arts-centric businesses that range from nonprofit museums, symphonies, and theaters to for-profit film, architecture, and advertising companies. The creative industries are the high-octane fuel that drives the "information economy," the fastest growing segment of the nation's economy.

Nationally, there are 612,095 businesses in the U.S. involved in the creation or distribution of the arts that employ 2.98 million people, which is 4.3 percent of all businesses and 2.2 percent of all employees. Between 2007 and 2008, the number of arts businesses and employees grew 12 percent. The source for these data is Dun & Bradstreet, the most comprehensive and trusted source for business information in the U.S. Growth of the businesses that comprise the creative industries was greater than the increase among the 14.3 million businesses tracked by Dun & Bradstreet.

As of January 2008, 3rd Suffolk is home to 607 arts-related businesses that employ 6,323 people. These arts-centric businesses play an important role in building and sustaining economic vibrancy. They employ people, spend money locally, generate government revenue, and are a cornerstone of tourism and economic development. The map below provides a clear picture of the creative industries in **3rd Suffolk**, with each dot representing an arts-centric business.

607 Arts-Related Businesses in 3rd Suffolk Employ 6,323 People

- Arts-Related Business**
- Museum/Collections
 - Performing Arts
 - Visual/Photography
 - Film, Radio, TV
 - Design/Publishing
 - Arts Schools/Services





Arts-Related Business and Employment in 3rd Suffolk January 2008

CATEGORY	BUSINESSES	EMPLOYEES
Museums and Collections	15	480
Museums	12	103
Zoos and Botanical	1	350
Historical Society	2	27
Performing Arts	83	783
Music	25	138
Theater	7	62
Dance	1	115
Opera	2	155
Services & Facilities	28	264
Performers	20	49
Visual Arts/Photography	170	650
Crafts	29	116
Visual Arts	20	29
Photography	99	364
Services	22	141
Film, Radio and TV	58	645
Motion Pictures	43	291
Television	14	351
Radio	1	3
Design and Publishing	266	3,628
Architecture	133	1,632
Design	64	180
Publishing	10	1,131
Advertising	59	685
Arts Schools and Services	15	137
Arts Councils	2	13
Arts Schools and Instruction	12	120
Agents	1	4
GRAND TOTAL	607	6,323

Note: As the source of these data is based solely on businesses that have registered with Dun & Bradstreet, our analyses indicate an under-representation of nonprofit arts organizations and individual artists. Therefore, this Creative Industries report should be considered a conservative estimate. For more information, maps, and to make sure you are included in our Creative Industries research, visit www.AmericansForTheArts.org/CreativeIndustries



Arts-Related Business and Employment in 3rd Suffolk 2007 to 2008

CATEGORY	BUSINESSES			EMPLOYEES		
	2007	2008	% Change	2007	2008	% Change
Museums and Collections	13	15	15.38%	466	480	3.00%
Museums	10	12	20.00%	97	103	6.19%
Zoos and Botanical	1	1	0.00%	350	350	0.00%
Historical Society	2	2	0.00%	19	27	42.11%
Performing Arts	69	83	20.29%	684	783	14.47%
Music	20	25	25.00%	115	138	20.00%
Theater	7	7	0.00%	70	62	-11.43%
Dance	1	1	0.00%	115	115	0.00%
Opera	2	2	0.00%	155	155	0.00%
Services & Facilities	22	28	27.27%	198	264	33.33%
Performers	17	20	17.65%	31	49	58.06%
Visual Arts/Photography	162	170	4.94%	544	650	19.49%
Crafts	27	29	7.41%	113	116	2.65%
Visual Arts	17	20	17.65%	23	29	26.09%
Photography	97	99	2.06%	353	364	3.12%
Services	21	22	4.76%	55	141	156.36%
Film, Radio and TV	52	58	11.54%	666	645	-3.15%
Motion Pictures	40	43	7.50%	313	291	-7.03%
Television	11	14	27.27%	351	351	0.00%
Radio	1	1	0.00%	2	3	50.00%
Design and Publishing	237	266	12.24%	3,652	3,628	-0.66%
Architecture	118	133	12.71%	1,813	1,632	-9.98%
Design	63	64	1.59%	143	180	25.87%
Publishing	10	10	0.00%	1,144	1,131	-1.14%
Advertising	46	59	28.26%	552	685	24.09%
Arts Schools and Services	13	15	15.38%	188	137	-27.13%
Arts Councils	2	2	0.00%	13	13	0.00%
Arts Schools and Instruction	9	12	33.33%	169	120	-28.99%
Agents	2	1	-50.00%	6	4	-33.33%
GRAND TOTAL	546	607	11.17%	6,200	6,323	1.98%

Data Source: D&B January 2008 & January 2007

www.AmericansForTheArts.org