

The Creative Industries in 2nd Suffolk

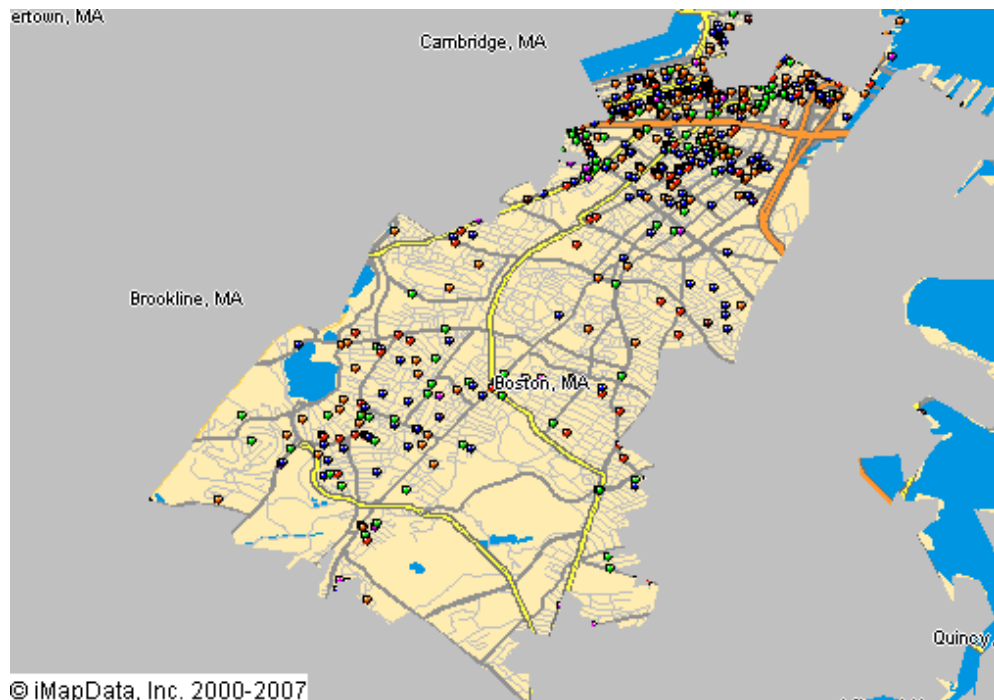
This *Creative Industries* report offers a research-based approach to understanding the scope and economic importance of the arts in **2nd Suffolk**. The creative industries are composed of arts-centric businesses that range from nonprofit museums, symphonies, and theaters to for-profit film, architecture, and advertising companies. The creative industries are the high-octane fuel that drives the "information economy," the fastest growing segment of the nation's economy.

Nationally, there are 612,095 businesses in the U.S. involved in the creation or distribution of the arts that employ 2.98 million people, which is 4.3 percent of all businesses and 2.2 percent of all employees. Between 2007 and 2008, the number of arts businesses and employees grew 12 percent. The source for these data is Dun & Bradstreet, the most comprehensive and trusted source for business information in the U.S. Growth of the businesses that comprise the creative industries was greater than the increase among the 14.3 million businesses tracked by Dun & Bradstreet.

As of January 2008, 2nd Suffolk is home to 829 arts-related businesses that employ 9,849 people. These arts-centric businesses play an important role in building and sustaining economic vibrancy. They employ people, spend money locally, generate government revenue, and are a cornerstone of tourism and economic development. The map below provides a clear picture of the creative industries in **2nd Suffolk**, with each dot representing an arts-centric business.

829 Arts-Related Businesses in 2nd Suffolk Employ 9,849 People

- Arts-Related Business**
- Museum/Collections
 - Performing Arts
 - Visual/Photography
 - Film, Radio, TV
 - Design/Publishing
 - Arts Schools/Services





Arts-Related Business and Employment in 2nd Suffolk January 2008

CATEGORY	BUSINESSES	EMPLOYEES
Museums and Collections	14	2,015
Museums	12	1,858
Zoos and Botanical	1	130
Historical Society	1	27
Performing Arts	162	1,182
Music	84	619
Theater	7	73
Dance	1	115
Opera	2	8
Services & Facilities	37	274
Performers	31	93
Visual Arts/Photography	241	807
Crafts	7	20
Visual Arts	45	101
Photography	136	464
Services	53	222
Film, Radio and TV	82	413
Motion Pictures	75	407
Television	5	2
Radio	2	4
Design and Publishing	299	4,452
Architecture	111	877
Design	94	188
Publishing	12	1,096
Advertising	82	2,291
Arts Schools and Services	31	980
Arts Councils	4	20
Arts Schools and Instruction	27	960
GRAND TOTAL	829	9,849

Note: As the source of these data is based solely on businesses that have registered with Dun & Bradstreet, our analyses indicate an under-representation of nonprofit arts organizations and individual artists. Therefore, this Creative Industries report should be considered a conservative estimate. For more information, maps, and to make sure you are included in our Creative Industries research, visit www.AmericansForTheArts.org/CreativeIndustries



Arts-Related Business and Employment in 2nd Suffolk 2007 to 2008

CATEGORY	BUSINESSES			EMPLOYEES		
	2007	2008	% Change	2007	2008	% Change
Museums and Collections	12	14	16.67%	2,005	2,015	0.50%
Museums	10	12	20.00%	1,856	1,858	0.11%
Zoos and Botanical	1	1	0.00%	130	130	0.00%
Historical Society	1	1	0.00%	19	27	42.11%
Performing Arts	130	162	24.62%	999	1,182	18.32%
Music	66	84	27.27%	573	619	8.03%
Theater	6	7	16.67%	31	73	135.48%
Dance	1	1	0.00%	115	115	0.00%
Opera	2	2	0.00%	8	8	0.00%
Services & Facilities	34	37	8.82%	223	274	22.87%
Performers	21	31	47.62%	49	93	89.80%
Visual Arts/Photography	231	241	4.33%	728	807	10.85%
Crafts	9	7	-22.22%	21	20	-4.76%
Visual Arts	41	45	9.76%	100	101	1.00%
Photography	130	136	4.62%	425	464	9.18%
Services	51	53	3.92%	182	222	21.98%
Film, Radio and TV	82	82	0.00%	459	413	-10.02%
Motion Pictures	73	75	2.74%	447	407	-8.95%
Television	5	5	0.00%	6	2	-66.67%
Radio	4	2	-50.00%	6	4	-33.33%
Design and Publishing	269	299	11.15%	4,224	4,452	5.40%
Architecture	103	111	7.77%	821	877	6.82%
Design	88	94	6.82%	174	188	8.05%
Publishing	13	12	-7.69%	1,135	1,096	-3.44%
Advertising	65	82	26.15%	2,094	2,291	9.41%
Arts Schools and Services	29	31	6.90%	1,059	980	-7.46%
Arts Councils	5	4	-20.00%	19	20	5.26%
Arts Schools and Instruction	23	27	17.39%	1,038	960	-7.51%
Agents	1	0	-100.00%	2	0	-200.00%
GRAND TOTAL	753	829	10.09%	9,474	9,849	3.96%

Data Source: D&B January 2008 & January 2007

www.AmericansForTheArts.org